



**Shenzhen Company :**

3-A1, Building A, Qingchuangcheng, Pinkexiao zhen, Zhangkeng community,  
Minzhi Town, Longhua District, Shenzhen, Guangdong Province, China  
Tel: 86.755.8886.8949

**China Factory :**

No.28 Binjiang Blvd., Shishuikou Village, Qiaotou Town, Dongguan, Guang Dong Province  
Tel: 86.769.8929.7777

**Vietnam Factory :**

P-9, Trang Due Industrial Zone Belongs To Dinh Vu - Cat Hai Economic Zone, An Hoa  
Commune, An Duong District, Hai Phong City  
Tel: 84.225.3558.880

Web: [www.power7tech.com](http://www.power7tech.com)

# Docking Stations Hubs and Enclosure/Storage Products





**Dongguan Factory**



**Vietnam Factory**

## – COMPANY PROFILE

Power 7 Technology specializes in the innovative design and manufacturing of complex external storage solutions, mobile power devices, and peripheral solutions that are compatible with variety of computer and mobile iOS platforms. Our dedication to excellence in technology, innovation, design, quality, and customer service has led to our reputation on a global scale. We have over 30 years of OEM/ODM and Electronics Manufacturing Services (EMS) experience. As a trusted supplier and manufacturer, we created long-term partnerships with several world-class and local businesses that rely on our knowledge, expertise, and services.

## – COMPANY VISION

To design, manufacture, and deliver excellent products and solutions to our customers in a timely and superior manner. Accept projects that are within our skills, knowledge, expertise and focus on the ones in which we excel in to become the partner of choice.

## – COMPANY PHILOSOPHY

**Competitive Advantage:** Competitive advantages are established through significant investments in research and development. Three principles guide our engineering and production practices: **QUALITY, QUALITY, and QUALITY.** Quality serves as our strongest competitive advantage.

**Creative Innovation:** Knowledge, experience, and imagination work together to foster creativity in the development of featured products.

**Accountability Commitment:** Providing steadfast support for our products and services is at the core of our meticulous approach.



## DK-01-N 16-in-1 USB-C Dock

- 1- USB C Cable: 81W output Gen2, add DP1.4, PD3.0 ports
- 1- DC Input: Connects to 150W charger
- 2- HDMI 2.0 Ports + 1 DisplayPort™ 1.4 Port: Connects to Monitor, TV or projector. Supports HDMI up to 1080p at 120Hz or UHD 3840x2160 at 60Hz, Supports 4K60Hz and MST
- 2- USB-A 3.2 Gen2 Ports: Supports up to 10Gbps data transmission. Downward compatible with USB2.0
- 2- USB-A 2.0 Ports: Supports data transmission up to 480Mbps
- 1- USB-C 3.2 Gen2 Port: Supports up to 10Gbps data transmission. Downward compatible with USB2.0
- 1- USB-C Port: Supports PD 18W
- 1- USB-A Port: Supports QC 18W
- 1- RJ45 Port: Supports 10/100/1000MB Network speeds
- 1- SD/TF Card Reader: Supports SDHC/SDXC/UHS-1
- 2- Audio Ports: Supports for 48k stereo output and mic input (cannot be used simultaneously)
- Compatible with Windows 8 and latest versions; Apple MacOS 10.12 and latest versions
- Housing: Aluminum and Plastic
- Product Dimensions: 114.7mm X 53.43mm X 139.85 mm
- Power Supply Included



## HB-10 7-in-1 Steam Deck Dock

- 1 USB-C Cable: Supports charging up to PD 100W
- Supports DisplayPort™ (DP) 1.2, 1.4 specifications and USB 3.2 up to 5Gbps data transfer speed
- 1- USB-C Port: Supports up to PD 100W input
- 2- USB-C 3.0 Ports: Supports data transfer speeds at up to 5Gbps, backward compatible with USB 2.0
- 1- HDMI: Supports up to UHD 3840x2160@60Hz
- 1- SD and 1- TF Card Reader: Supports SDHC/SDXC/UHS-1
- 1 RJ45 Port: Supports 10/100/1000MB Network speeds
- Compatible with Windows 8 and latest versions; Apple MacOS 12 and latest versions
- Housing: Plastic
- Product Dimensions: 167mm X 75.13mm X 32.55mm



## HB-09-N 5-in-1 Steam Deck Dock

- 1 USB-C Cable: Supports charging up to PD 100W
- Supports DisplayPort™ (DP) 1.2, 1.4 specifications and USB 3.2 up to 5Gbps data transfer speed
- 1- USB-C Port: Supports up to PD 100W input
- 2- USB-A 3.2 Gen1 Ports: Supports data transfer speeds up to 5Gbps, backward compatible with USB 2.0
- 1- TF Card Reader: Supports SDHC/SDXC/UHS-1
- 1- HDMI Port: Supports up to UHD 3840x2160@60Hz
- Compatible with Windows 8 and latest versions; Apple MacOS 12 and latest versions
- Housing: Plastic
- Product Dimensions: 81.37mm X 122mm X 33.70mm

## HS010 Hub

- 1- USB-C Cable: Connects to PC; supports USB4.0
- 1- USB-C Port: Supports up to PD 100W input
- 1- RJ45 Port: Supports 10/100/1000MB Network speeds
- 1- HDMI Port: Supports HDMI resolutions up to UHD 3840x2160 at 120Hz and 7680x4320 at 60Hz.
- 2- USB-A 3.2 Gen2 Ports: Supports data transfer speeds up to 10Gbps, backward compatible with USB 2.0
- 1- USB-C 3.2 Gen2 Port: Supports data transfer speeds up to 10Gbps, backward compatible with USB 2.0
- Compatible with Windows 8 and latest versions; Apple MacOS 12 and latest versions
- Housing: Aluminum / Plastic
- Product Dimensions: 116mm X 46mm X 14mm





## H2 Data Hub

- Micro USB3.0 Port: Connects to computer and supports up to 5V/2A input.
- USB-A 2.0 Port: Supports charging up to 5V/0.5A output, and data for smart phones or tablets
- SD Slot: Supports SD/SDHC/SDX C/USH-I memory card up to 2TB
- Built-in 5000mAh Li-Polymer Battery Cell
- Built-in SATA Connector: Supports 2.5" SATA HDD up to 9.5mm in height
- 4- LEDs for Power Status and Data
- Power On/Off Button
- Supports NTFS / FAT32 / exFAT / HFS+ / APFS File Systems
- Compatible with Windows 8 and latest versions; Apple MacOS 10.12 and latest versions
- Housing: Plastic
- Product Dimension: 129mm X 83.50mm X 25mm





### H3 Data Hub

- Micro USB3.0 Port: Connects to PC as an external storage and supports up to 5V/2A input
- USB-C Female Port: Supports charging up to 5V/0.5A output, and data for smart phones or tablets
- USB-A 2.0 Port: Supports charging up to 5V/0.5A output, and data for smart phones or tablets
- SD Slot: Supports SD/SDHC/SDXC/USH-I memory card up to 2TB
- Built-in 5000mAh Li-Polymer Battery Cell
- Built-in SATA Connector: Supports 2.5" SATA HDD up to 9.5mm in height
- 4- LEDs for Power Status and Data
- Supports NTFS / FAT32 / exFAT / HFS+ / APFS File Systems
- Compatible with Windows 8 and latest versions; Apple MacOS 10.12 and latest versions
- Power On/Off Button
- Housing: Plastic and Micro Fiber
- Product Dimension: 117mm X 80mm X 22mm



## DK-02 USB-C Dock

- 1- USB-C Cable: Supports DisplayPort™ based on 1.2a specification
- 1- USB-C PD Port: Supports PD 18W
- 2- HDMI Ports: Supports up to UHD 3840x2160@60Hz
- 2- USB-A 3.0 Ports: Supports data transfer up to 5Gbps. Backward compatible with USB 2.0
- 2- USB-A 2.0 Ports: Supports data transfer up to 480Mbps
- 1- RJ45 Port: Supports 10/100/1000MB Network speeds
- 1- SD/TF Card Reader: Supports SDHC/SDXC/UHS-1
- 1- 3.5mm Audio Port: Supports 48K stereo audio output and microphone input
- Compatible with Windows 8 and latest versions; Apple MacOS 10.12 and latest versions
- Housing: Aluminum/ Plastic
- Product Dimensions: 230mm X 40.30mm X 18mm
- Power Supply Included



## CH04 Hub

- 1- USB-C Cable: Connects to PC; DisplayPort™ (DP) input supports DisplayPort™ 1.2, 4 lanes
- 1- HDMI Port: Supports HDMI resolutions up to 3840 x 2160 at 60Hz and 4096 x 2160 at 60Hz
- Compatible with Windows 8 and latest versions; Apple MacOS 10.12 and latest versions
- Housing: Aluminum/ Plastic
- Product Dimensions: 62mm X 34mm X 14mm

## CH08 Hub

- 1- USB-C Cable: Connects to PC; DisplayPort™ (DP) input supports DisplayPort™ 1.2, 4 lanes
- 1- HDMI Port: Supports UHD resolutions up to 7680 X 4320 @ 60Hz
- Compatible with Windows 8 and latest versions; Apple MacOS 10.12 and latest versions
- Housing: Aluminum/ Plastic
- Product Dimensions: 62mm X 34mm X 14mm



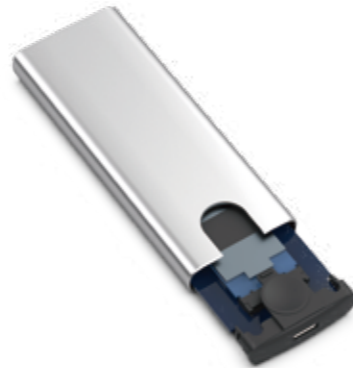


### DS017 SSD Enclosure

- USB-C Port: Compatible with USB 3.2 Gen2 and Gen1, supports data rate of up to 10Gbps
- Built-in M.2 connector; supports NVMe protocol
- Supports NTFS, FAT32, exFAT File Systems
- Compatible with Windows 10/11 and latest versions; Apple MacOS 10.6 and latest versions; Apple iPad Pro 2018 with USB-C Port; Android 8.0 and latest versions
- Housing: Plastic and Aluminum
- Product Dimensions: 105mm X 40mm X 13.6mm

### UM003 SSD Enclosure

- USB-C Port: Compatible with USB 3.2 Gen2 and Gen1, supports data rate of up to 10Gbps
- Built-in M.2 SSD interface with support for SATA III data transmission.
- Supports M.2 2230, 2242, 2260, and 2280 SSD form factors
- Compatible with Windows 7 and latest versions; Apple MacOS 12 and latest versions
- Housing: Aluminum and Zinc Alloy
- Product Dimensions: 102mm X 30mm X 9mm



### HB-02 Hub

- USB-Cable: Connects to PC, supports USB 3.2 Gen1 (5Gbps data transfer speed)
- 4- USB-A Ports: USB 3.2 Gen1, data transfer speeds up to 5Gbps
- Compatible with Windows 8 and latest versions; Apple MacOS 10.12 and latest versions
- Housing: Plastic
- Product Dimensions: 106mm X 30.50mm X 11mm

### HB-12 Hub

- 1- USB-C Cable: Connects to PC, supports USB 3.2 Gen1 (5Gbps data transfer speed)
- 2- USB-A 3.2 Gen1 Ports: Supports data transfer speeds up to 5Gbps.
- 2- USB-C 3.2 Gen1 Ports: Supports data transfer speeds up to 5Gbps.
- Compatible with Windows 8 and latest versions; Apple MacOS 12 and latest versions
- Housing: Plastic
- Product Dimensions: 106mm X 30.50mm X 11mm





## M2 Hub

- 1 USB-C Cable: Supports charging up to PD 100W
- Supports DisplayPort™ (DP) 1.2, 1.4 specifications and USB 3.2 up to 10Gbps data transfer speed
- 1- USB-C Port: Supports up to PD 100W input
- Built-in M.2 interface; Supports PCIe and NVMe protocol
- 2- USB-A 3.2 Gen2 Ports: Supports data transfer speeds up to 10Gbps, backward compatible with USB 2.0
- 1- HDMI Port: Supports HDMI resolutions up to 1080p at 60Hz and UHD 3840x2160 at 60Hz
- 1 RJ45 Port: Supports 10/100/1000MB Network speeds
- Compatible with Windows 8 and latest versions; Apple MacOS 12 and latest versions
- Housing: Aluminum / Plastic
- Product Dimensions: 136mm X 46mm X 18mm



## M3 Hub

- 1- USB-C Cable: Supports charging up to PD 100W
- Supports DisplayPort™ (DP) 1.2, 1.4 specifications and USB 3.2 up to 10Gbps data transfer speed
- 1- USB-C Port: Supports up to PD 100W input
- Built-in M.2 interface; Supports PCIe and NVMe protocol
- 2- USB-A 3.2 Gen2 Ports: Supports data transfer speeds up to 10Gbps
- 1- HDMI Port: Supports HDMI resolutions up to UHD 3840x2160@60Hz
- 1 RJ45 Port: Supports 10/100/1000MB Network speeds
- Compatible with Windows 8 and latest versions; Apple MacOS 12 and latest versions
- Housing: Aluminum and Plastic
- Product Dimensions: 136mm X 46mm X 18mm



## UC018 Hub

- 1- USB-C Cable: Supports DisplayPort™ 2-lane 1.4a specifications
- 1- USB-C: Supports PD 3.0 Charging, 5V/9V/12V/15V/20V up to 100W Maximum
- 2- HDMI Ports: Connects to monitors, TVs, or projectors, supports HDMI up to 4K at 60Hz
- 2- USB-A 3.0 Ports: Supports data transfer speeds up to 5Gbps, backward compatible with USB 2.0
- 1- USB-A 2.0 Port: Supports data transfer speeds up to 480Mbps
- 1- USB-C 3.0 Port: Supports data transfer speeds up to 5Gbps, backward compatible with USB 2.0
- 1- RJ45 Port: Supports 10/100/1000MB Network speeds
- 1- SD / 1 TF Card Reader: Supports SDHC/SDXC/UHS-1
- 1- 3.5mm Audio Port: Supports 48K stereo audio output and microphone input
- Compatible with Windows 8 and latest versions; Apple MacOS 12 and latest versions
- Housing: Aluminum / Plastic
- Product Dimensions: 116mm X 46mm X 14mm



## M5 Hub

- 1- USB-C Cable: Charges USB-C laptops up to PD 125W; DisplayPort (DP) output supports DP 1.2/1.4; additionally supports USB 3.2 for 10Gbps data transmission.
- 1- USB-C Port: Supports up to PD 100W input
- 1- USB-C 3.2 Gen2 Ports: Supports data transfer speeds up to 10Gbps, backward compatible with USB 2.0.
- 1 - USB-A 3.0 Port: USB 3.2 Gen2 for high-speed data transmission at 10Gbps, with backward compatibility with USB 2.0
- 1- HDMI Port: Supports UHD resolution of 3840x2160@60Hz. Backward compatible
- 1- SD and 1- TF Card Reader: Supports SDHC/SDXC/UHS-1
- 1- RJ45 Port: Supports 10/100/1000MB Network speeds
- Compatible with Windows 8 and latest versions; Apple MacOS 10.12 and latest versions
- Housing: Aluminum / Plastic
- Product Dimension: 116mm X 46mm X 14mm



## M4 Hub

- 1- USB-C Cable: Connects to PC; supports USB4.0
- 1- USB-C Port: Supports up to PD 100W input
- 2- USB-C 3.2 Gen2 Ports: Supports data transfer speeds up to 10Gbps, backward compatible with USB 2.0
- 1- USB-A 2.0 Port: Supports data transfer speeds up to 480Mbps
- 1- USB-C Port: Supports DisplayPort™ (DP) 1.4 specifications and up to 10Gbps data transfer speed
- 1- HDMI Port: Supports HDMI up to 1080p at 60Hz and UHD 3840x2160 at 60Hz
- Compatible with Windows 8 and latest versions; Apple MacOS 10.12 and latest versions
- Housing: Plastic
- Product Dimensions: 126mm X 46mm X 16mm



## UC017 Hub

- 1- USB-C Cable: Supports DisplayPort™, 1.2 lanes, 1.2a specifications
- 1- USB-C Port: Supports up to PD 100W input
- 1- HDMI Port: Supports HDMI resolutions up to 1080p at 60Hz and UHD 3840x2160 at 30Hz.
- 3- USB-A 3.0 Ports: Support data transfer speeds up to 5Gbps, backward compatible with USB 2.0
- 1- SD and 1- TF 2.0 Card Reader: Supports SDHC/SDXC. SD and TF slots cannot be used simultaneously
- Compatible with Windows 8 and latest versions; Apple MacOS 10.12 and latest versions
- Housing: Aluminum and Plastic
- Product Dimensions: 100mm X 40mm X 12.50mm

## UC020 Hub

- 1- USB-C Cable: Supports DisplayPort™, 1.2 lanes, 1.4a specifications
- 1- USB-C Port: Supports up to PD 100W input
- 1- HDMI Port: Supports HDMI resolutions up to UHD of 3840x2160@60Hz
- 2- USB-A 3.0 Ports: Support data transfer speeds up to 5Gbps, backward compatible with USB 2.0
- 3- USB-C 3.0 Ports: Supports data transmission speeds of up to 5Gbps, backward compatible with USB 2.0
- 1- 3.5mm Audio Port: Supports 48k stereo output and microphone input
- 1- SD and 1- TF Card Reader: Supports SDHC/SDXC/UHS-1
- Compatible with Windows 8 and latest versions; Apple MacOS 10.12 and latest versions
- Housing: Aluminum and Plastic
- Product Dimension: 105mm X 40mm X 10mm





## USB 4.0 SSD Enclosure

- USB-C 4.0 Port: Supports data rate up to 40Gbps
- Built-in M.2 interface; Supports PCIe and NVMe protocol
- Supports M.2 2230, 2242, 2260, and 2280 SSD form factors
- Supports NTFS / FAT32 / exFAT / HFS+ / APFS File Systems
- Compatible with Windows 11 and latest versions; Apple MacOS 13.5 and latest versions
- Housing: Aluminum/ Plastic/ Silicone
- Product Dimensions: 140mm X 60mm X 21mm



## FS01 SSD Enclosure with Fingerprint Reader

- USB-C Port: Compatible with USB 3.2 Gen2 and Gen1, supports data rate of up to 10Gbps
- Built-in M.2 SSD interface with support for SATA III data transmission
- Supports M.2 2230, 2242, 2260, and 2280 SSD form factors
- Built-in fingerprint module for added security; features ATA encryption lock
- Supports NTFS / FAT32 / exFAT / HFS+ / APFS File Systems
- Compatible with Windows 10/11 and latest versions; Apple MacOS 10.12 and latest versions
- Housing: Aluminum and Zinc Alloy
- Product Dimensions: 102mm X 30mm X 9mm



## GS01-MES SSD Enclosure with Fingerprint Reader

- USB-C Port: Compatible with USB 3.2 Gen2 and Gen1, supports data rate of up to 10Gbps
- Power/Data LED
- Built-in M.2 interface for SATA III data transmission
- Built-in fingerprint module for added security; features ATA encryption lock.
- Supports NTFS / FAT32 / exFAT / HFS+ / APFS File Systems
- Compatible with Windows 10/11 and latest versions; Apple MacOS 10.12 and latest versions
- Housing: Aluminum and Zinc Alloy
- Product Dimensions: 102.40mm X 30.40mm X 9.40mm



## H4 Data Hub Enclosure

- USB-C Port A: Connects to PC as an external storage and supports up to 5V/2A input
- USB-C Port B: Supports charging up to 5V/0.5A output, and data for smart phones or tablets
- SD Slots: Supports SD/SDHC/SDXC/USH-I memory cards up to 2TB in capacity
- Built-in 5000mAh Li-Polymer Battery Cell
- Supports M.2 2230, 2242, 2260, and 2280 SSD form factors; supports read and write speed up to 500MB/s
- Supports NTFS / FAT32 / exFAT / HFS+ / APFS File Systems
- Compatible with Windows 10/11 and latest versions; Apple MacOS 10.12 and latest versions
- 4 LEDs for Power Status and Data
- Power On/Off Button: remove
- Housing: Plastic and Zinc Alloy
- Product Dimensions: 106mm X 68.60mm X 18.50mm



## BS017 SSD Enclosure

- USB-C Port: Compatible with USB 3.2 Gen2 and Gen1, supports data rate of up to 10Gbps
- Built in M.2 interface with support for the NVMe protocol
- Supports NTFS, FAT32, and exFAT File Systems
- Compatible with Windows 10/11 and latest versions; Apple MacOS 13.5 and latest versions; Apple iPad Pro 2018 with USB-C Port; Android 8.0 and latest versions
- Housing: Plastic/ Aluminum
- Product Dimensions: 105mm X 40 mm X 13.60 mm

## DS01 SSD Enclosure

- USB-C Port: Compatible with USB 3.2 Gen2 and Gen1, supports data rate of up to 10Gbps
- Built-in M.2 interface with support for the NVMe protocol
- Supports NTFS, FAT32, and exFAT File Systems
- Compatible with Windows 10/11 and latest versions; Apple MacOS 10.12 and latest versions; Apple iPad Pro 2018 with USB-C Port; Android 8.0 and latest versions
- Housing: Plastic and Zinc Alloy
- Product Dimensions: 102mm X 45mm X 14mm



## Angle 2.5" HDD Enclosure

- Micro USB 3.0 Port: Supports USB 3.2 Gen 1, data transfer speeds up to 5 Gbps
- Built-in SATA Connector: Supports SATA3, data transfer speeds up to 6 Gbps
- Supports NTFS, FAT32, exFAT, HFS+ and APFS
- Compatible with Windows 7 and latest versions; Apple MacOS 10.12 and latest versions
- Housing: Plastic
- Product Dimensions: 127mm X 78mm X 7.30mm



## MC35 3.5" HDD Enclosure

- Micro USB 3.0 Port: Supports USB 3.2 Gen 1, data transfer speeds up to 5 Gbps
- DC JACK: Requires 12V/2A external power supply
- Power on or off switch
- Built-in SATA Connector
- Supports NTFS, FAT32, exFAT, HFS+ and APFS
- Compatible with Windows 7 and latest versions; Apple MacOS 10.11 and latest versions
- Housing: Plastic
- Product Dimensions: 186mm X 117mm X 34.50mm



## Magnetic SSD

- USB-C Port: Support USB3.2 Gen2\*2 and Gen1, data rate of up to 20Gbps
- Housing: Aluminum/palstic
- Dimension: 59\*59\*11.5mm



## USB20G RAID SSD

- USB-C Port: Support USB3.2 Gen2 \*2 data rate of up to 20Gbps
- Support M.2 interface SSD
- Built in M.2\*2 connector. Support PCIE Gen3\*4+SATA3 data transmission
- Housing: Aluminum/Zinc alloy
- Dimension: 140\*70\*21mm

